

# Portable Scale Instructions

## Contents:

- 2 wood crates containing scales (**Caution: Boxes are heavy**)
- 5 Scales (One is a little different, used for tongue)
- 1 Junction Box (has one cord permanently attached that connects to scale display)
- 1 Scale Display
- 1 AC Adapter
- 5 Cords

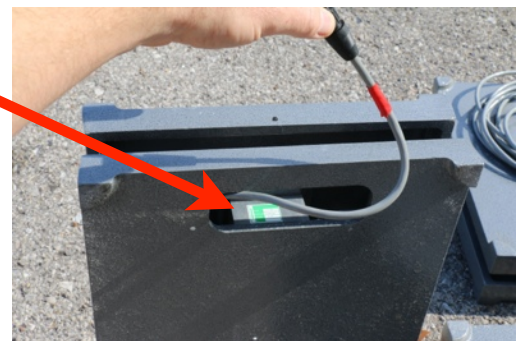
**Almost everything must be removed from the boat for weighing. Reference Class Rules 2.7 and Weight inspection sheet and notes.**

The general idea is that you weigh the boat and the trailer together and then the trailer on its own. Each time the trailer must be disconnected from the vehicle.

The boat is weighed without the outboard motor, that way a boat does not have to be reweighed if a different motor is used. We also need the individual weight of the motor and rudder. This can be done with these scales. **Be sure to note whether the boat is weighed with or without the rudder.**

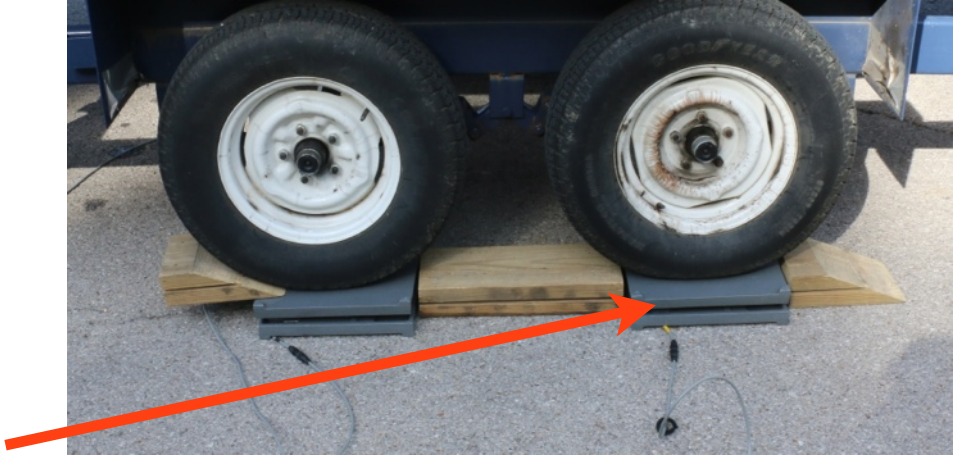
1. Remove equipment from crates.
2. Pull each cord out through scale handle.

The display works on battery power or plugged in. Recommend using battery power with close proximity of water.



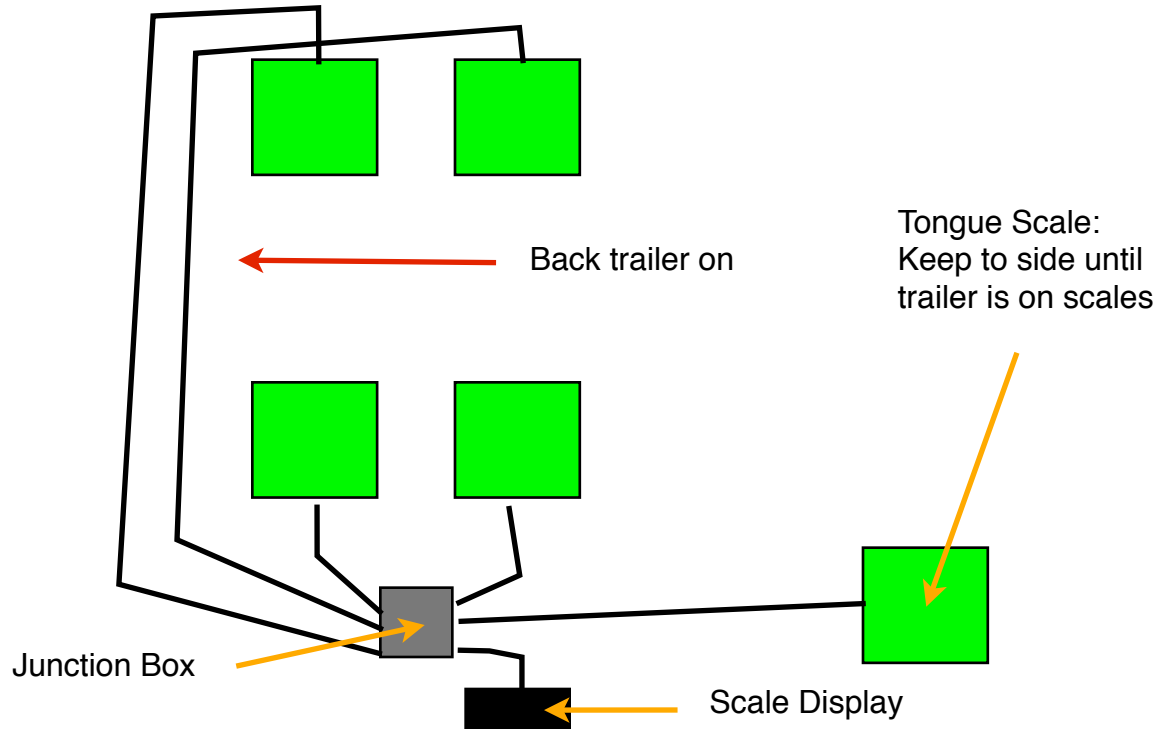
3. Ensure cord exits out of bottom of scale between the two foot posts.
4. Find the one scale that is different. It is for the tongue.
5. Each scale has its own color coded cord, match scale with appropriate cord.
6. Position scales so that you will back the trailer onto the scales.
7. Leave the 5th (Tongue scale) off to the side so that the cord does not get run over.

8. The setup is ramp, scale, spacer, scale, ramp. Leave about 1/4" spacing between the scales and the spacer. (Once on the scales use chocks. Make sure you weigh trailer only, the same way)

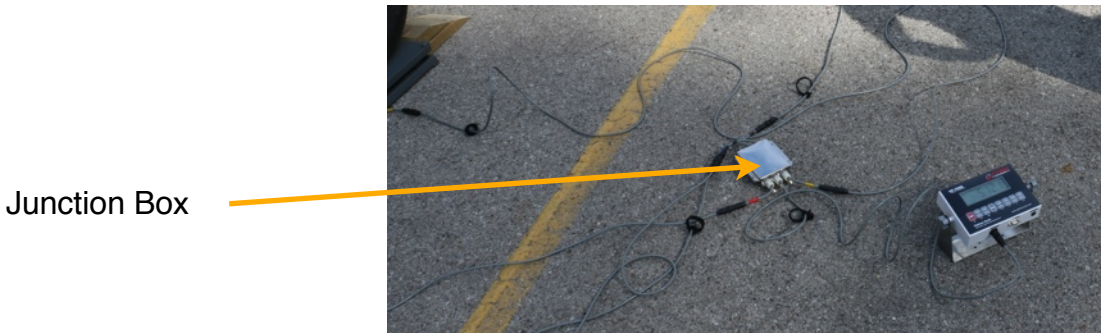


9. **Ensure cords are free and between the feet.** Notice how the cords exit through the scale between the foot posts

10. Position the cords from far side scales so that they run towards the back of the boat and will not get run over



11. Lead all four cords for the wheel scales to the junction box and connect the cords to the appropriate color coded pigtail.



12. Connect the cord for the tongue scale to the junction box and leave the scale off to the side until the boat is backed onto the scales

13. Connect the final cord from the junction box to the scale display.

14. Once the trailer is positioned put the ramp behind each wheel, followed by the first scale, spacer, second scale. Ensure they are in a straight line with the trailer. You may want to use some sort of guide (2X4) to make sure they are lined up.

15. Turn on display and verify the display reads 0, if not select "ZERO" button prior to backing trailer on.



16. Back the trailer on ensuring the wheels are fully on the scales and not touching the spacers or ramps.

17. Use something to chock the trailer.

18. Position the tongue scale under the tongue wheel/jack and crank up the trailer off of the vehicle.

19. Take the reading from the scale display once the number settles. Record weight on provided weight sheet.

20. Hook up to the vehicle then remove chocks.

21. Move tongue scale off to the side and clear all cables prior to driving off scales.
22. Drive boat off of the scales
23. Repeat procedure for trailer only

## Packing Scales Up

1. Charge scale display using AC adapter so that it is ready for the next weighing.
2. Remove cords from their scale and junction box and coil up.
3. Tuck scale pigtails back through handle (reference first picture on page 1)
4. Place three scales in the crate without the wooden divider using pad between each.



5. Place last two scales in crate with divider.
6. Place cords, scale display, junction box and AC adapter on other side of divider.



7. Place covers on and secure. Thank you for your help with the S2 7.9 Class!  
Any questions or suggestions contact Chris at [chrisraig@s279.org](mailto:chrisraig@s279.org).